

LAN Cable

Category 6

HELUKAT® 450
F/FTP



Cable structure

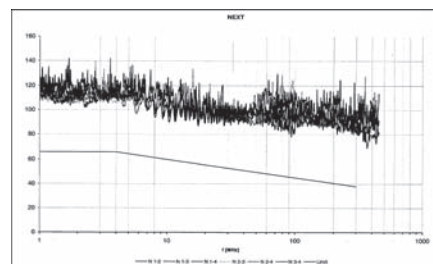
Inner conductor diameter:
Conductor material:
Core insulation:
Core colours:
Shielding 1:
Screen over stranding element:
Screen 1 over stranding:
Screen 2 over stranding:
Drain wire:
Outer sheath material:
Outer diameter:
Outer sheath colour:

0,52 mm
Copper, bare
Foam-skin-PE
wh/bu, wh/og, wh/gn, wh/bn
-
Polyester foil, aluminium-lined
Polyester foil, aluminium-lined
-
yes
FRNC
approx. 7,4 mm
Green similar to RAL 6018

Electrical data

Characteristic impedance:
Loop resistance:
Mutual capacitance:
Rel. propagation velocity:

100 Ohm \pm 15 ohm at 1 to 100 MHz
100 Ohm \pm 20 ohm at 101 to 450 MHz
146 Ohm/km max.
43 nF/km nom.
79 %



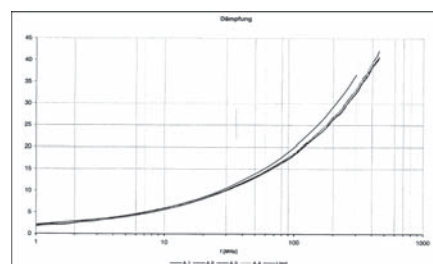
Typical values

Frequency (MHz)	10	16	62,5	100	200	300	450
Attenuation (dB/100m)	5,4	7,0	13,8	17,6	26,0	34,0	38,5
Next (db)	100,0	100,0	95,8	94,5	91,0	87,0	84,3
ACR (db)	94,6	93,0	82,0	76,9	65,0	53,0	45,8

Technical data

Weight:
bending radius, repeated:
Operating temperature range min.:
Operating temperature range max.:
Caloric load, approx. value:
Copper weight:

approx. 50 kg/km
59 mm
-20°C
+60°C
0,57 MJ/m
24,00 kg/km



Norms

Acc. to ISO/IEC 11801, Acc. to EN 50173, Acc. to EIA/TIA 568-A, Category 6, Flame-retardant acc. to IEC 60332-3, Smoke density acc. to IEC 61034, Halogen-free acc. to 60754-2, Corrosiveness acc. to EN50267-2-3

Application

HELUKAT®450 data cables are used in the tertiary, but also in the secondary level of a network. They are characterized by large performance reserves and outstanding performance. They can be used to implement services such as Gigabit Ethernet, Fast Ethernet, Ethernet, ATM155, FDDI, token ring 4/16 Mbit/s or ISDN absolutely trouble-free. Likewise, the mechanical characteristics are perfectly suited for the application in tight cable channels and platforms due to their optimized construction.

Part no.

82501, F/FTP 4x2xAWG 24/1 FRNC (S-STP)

Dimensions and specifications may be changed without prior notice.